



Asclera® in your Practice

methapharm
Specialty Pharmaceuticals


ASCLERA®
(Polidocanol) Injection

Who Is Methapharm?

- Started in 1996, Methapharm Inc. is a privately owned specialty pharmaceutical company with a focus on the acquisition, licensing, partnering, and promotion of specialty pharmaceutical products in North America.
- Methapharm Inc., acquired US distribution rights to Asclera from Merz Pharma GmbH & Co. KGaA on February 1st, 2022.

Our Partner

Kreussler Pharma

- Founded in 1948, Kreussler Pharma is known for developing and manufacturing pharmaceutical drugs, medicinal and cosmetic products for the national and international markets
- Aethoxysklerol[®] (Polidocanol), known by the brand name Asclera[®] (Polidocanol) Injection in the US, is available in 50 different countries worldwide

What is Asclera®?

Asclera® (Polidocanol) Injection is indicated to sclerose¹:

- Uncomplicated spider veins (varicose veins ≤ 1 mm in diameter).
- Uncomplicated reticular veins (varicose veins 1 to 3 mm in diameter) in the lower extremity.

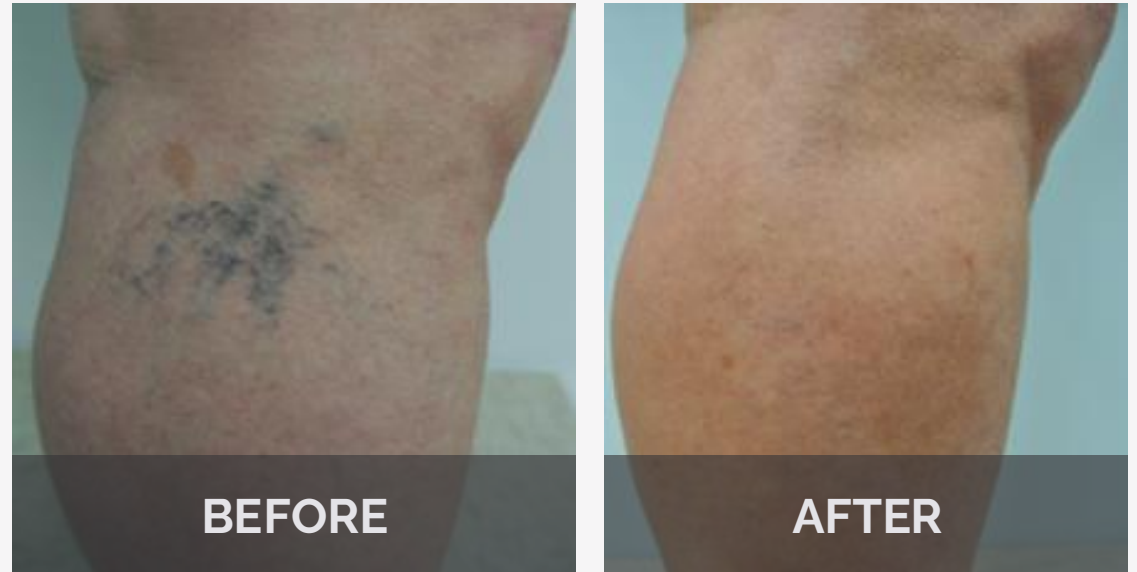


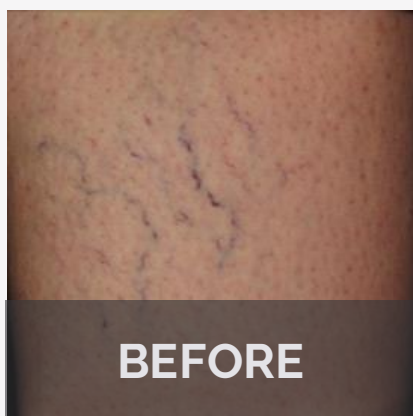
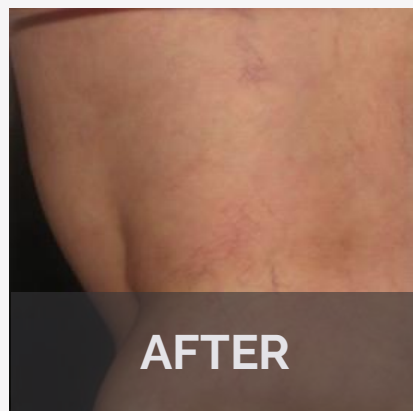
Before and After Treatment with Asclera®

Small Varicose / Reticular Veins



Telangiectasias / Spider Veins





Contraindications¹

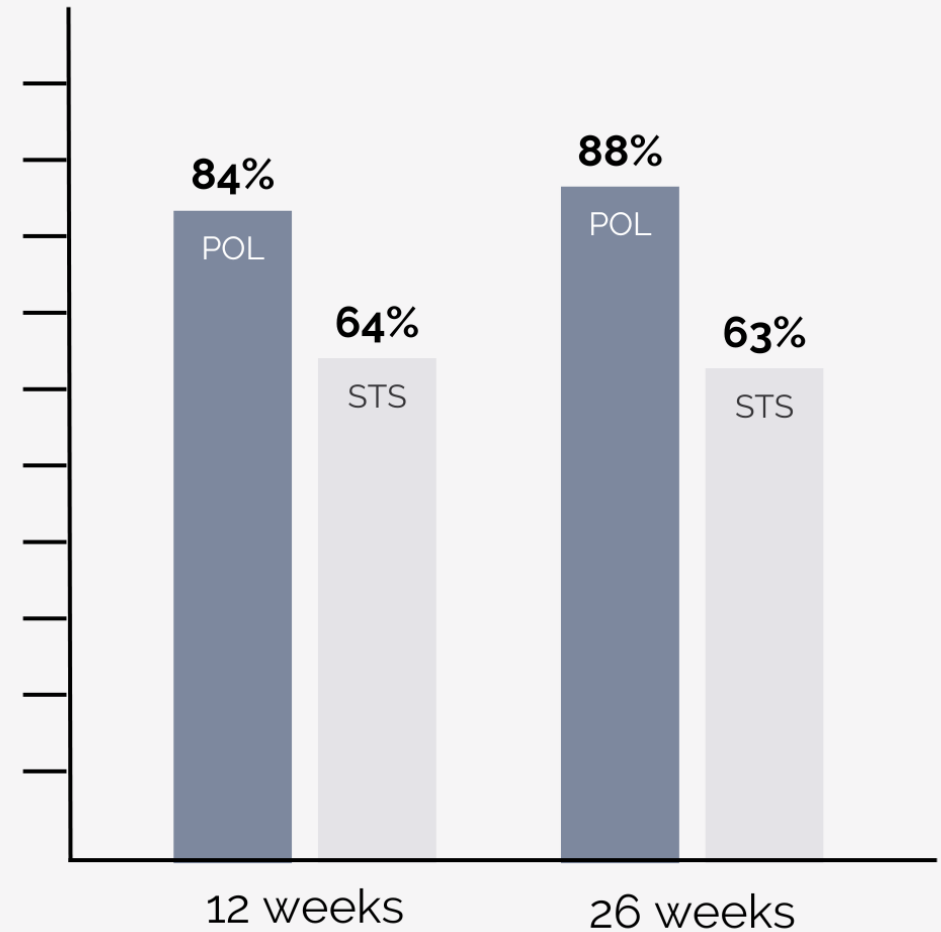
- Known allergies to polidocanol
- Patients with acute thrombolytic disease

Specific Populations¹

- Pregnancy
- Nursing

Patient satisfaction at 12 and 26 weeks²

- The majority of patients treated with Polidocanol (POL) were overall satisfied with their treatment, showing an 84% and 88% satisfaction at 12 and 26 weeks.
- Patient satisfaction when treated with both STS was significantly lower, showing 64% and 63% respectively.



Asclera vs. STS: Safety Profile²

Reaction / Adverse Event	Asclera	STS
Injection Site Irritation	41.8%	73.3%
Injection Site Erythema	0.6%	4.8%
Injection Site Scar	0.6%	12.4%
Discoloration	41.1%	74.3%
Neovascularization	8.9%	20%
Necrosis	0.6%	14.3%

Strength Availability

Asclera® is available in two different strengths:

- Asclera® 0.5% is indicated for Spider Veins (veins ≤ 1 mm in diameter)
- Asclera® 1% is indicated for Reticular Veins (veins 1 mm to 3 mm in diameter)



Packaging

- Each box of Asclera® has 5 glass ampules
- Each glass ampule contains 2 mL of Asclera®



Administration¹

- Solution strength depends on the size and extent of the veins
- Extensive varicosities may require multiple treatment sessions separated by 1-2 weeks
- Maximum volume per session 10 mL
- Use 0.1 to 0.3 mL for each injection into each vein



Post Treatment: in Clinic¹

- After the needle has been removed and the injection site has been covered, apply compression in the form of a stocking or bandage.
- Walk for 15 to 20 minutes immediately after the procedure and daily for the next few days.

Post Treatment: Compression¹

- Maintain compression for 2 to 3 days after treatment for spider veins and 5 to 7 days for reticular veins, and for 2 to 3 weeks during the daytime.
- Compression stockings or support hose should be thigh or knee high depending upon the area treated in order to provide adequate coverage.

Post Treatment: Long Term¹

- For 2 to 3 days following treatment, avoid heavy exercise, sunbathing, long plane flights, and hot baths or sauna
- Extensive varicosities may require multiple treatment sessions separated by 1-2 weeks
- Small thrombi (trapped blood or retained coagulum) that develop may be removed by microthrombectomy (puncture aspiration or extraction)

Asclera Pricing

Product Code	Product Description	NDC	Packaging	List Price
5000038	Asclera 0.5% Ampule (10 mg per 2 mL)	67850-140-05	5 ampules/ carton	\$98.50
5000039	Asclera 1% Ampule (20 mg per 2 mL)	67850-141-05	5 ampules/ carton	\$113.00

Minimum Order: Shipping charges of \$35.00 will be added to orders that are less than a total of 5 cartons (SKUs can be combined to achieve 5 cartons).

Return on Investment (ROI)

Asclera Treatment	Price of Asclera*	Cost per each 2mL Ampule	Example: Patient Charge	2 Ampules Per Session	Single Session ROI**	3 Sessions	6 sessions
0.5%	\$98.50	\$19.70	\$400	\$39.40	\$360.60	\$1,081.80	\$2,163.60
1.0%	\$113.00	\$22.60	\$400	\$45.20	\$354.80	\$1,064.40	\$2,128.80

Room Time: 30 min
Active Time: 20 min
Treatment sessions: 3 to 6 per Pt
Price Per Session: \$350-500+
Add on Ampule: \$100-150

A donut chart with a dark blue outer ring and a black inner circle. The text '88%' is written in white inside the black circle. A small white wedge is missing from the dark blue ring, representing the 88% satisfaction rate.

88%

88% of patients treated with Asclera were satisfied after 26 weeks compared to 63% of patients treated with STS.²

Clinical Resources

- [Asclera Website](#)
- [PowerPoint: Asclera in Your Practice](#)
- [Asclera: Practice at a Glance](#)
- [Video Resources](#)
- [Asclera: Know what to Expect](#)
- [Asclera: Consultation Consent](#)

INDICATION AND USAGE: Asclera (polidocanol) is indicated to sclerose uncomplicated spider veins (varicose veins ≤ 1 mm in diameter) and uncomplicated reticular veins (varicose veins 1 to 3 mm in diameter) in the lower extremity.

CONTRAINDICATIONS: Asclera is contraindicated for patients with known allergy to polidocanol and patients with acute thromboembolic diseases.

ADVERSE REACTIONS: In clinical studies, the following adverse reactions were observed after using Asclera and were more common with Asclera than placebo: injection site hematoma, injection site irritation, injection site discoloration, injection site pain, injection site itching, injection site warmth, neovascularization, injection site clotting. Please consult the package insert for full prescribing information including warnings and precautions, available on request by calling Methapharm Medical Information at 1-866-701-4636, or to view and download at www.asclera.com. To report SUSPECTED ADVERSE REACTIONS, contact Methapharm Medical Information at 1-833-766-8346, or FDA at 1-800-FDA-1088 or www.fda.gov/medwatch. For all other Asclera inquiries please call 1-833-766-8346.

REFERENCES: 1) Asclera® Full Prescribing Information. Methapharm, Inc. 2) Rabe E, Schliephake D, Otto J, Breu FX, et al. Sclerotherapy of telangiectases and reticular veins: a double-blind, randomized, comparative clinical trial of polidocanol, sodium tetradecyl sulphate and isotonic saline (EASI study). *Phlebology* 2010;25:124–31.

Distributed by Methapharm, Inc. Copyright © 2025 Methapharm, Inc. All rights reserved. Asclera® is a registered trademark of Chemische Fabrik Kreussler & Co. GmbH.

Thank you for your time!